

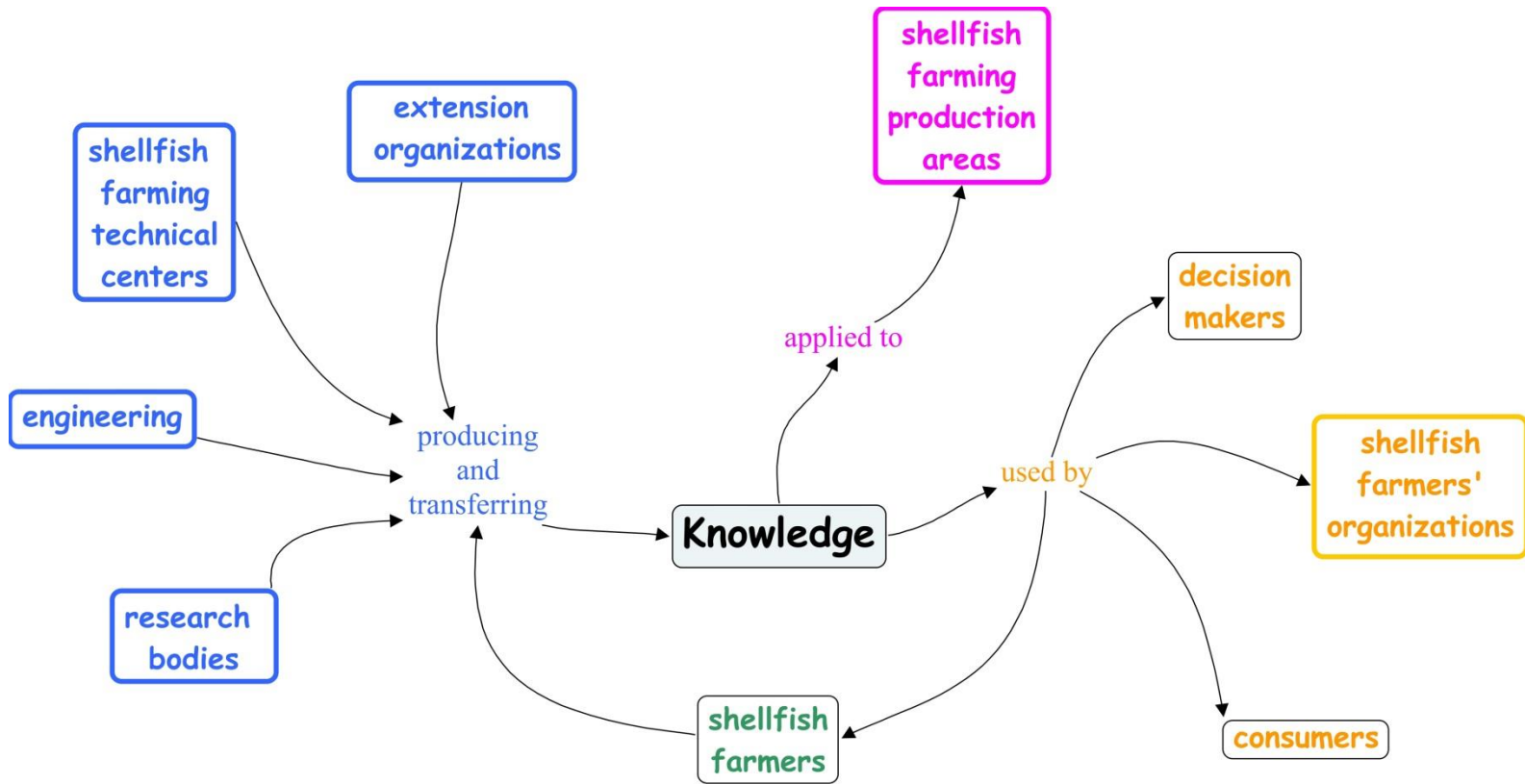


WP4 Mapping the sector

Jean PROU – Erwann Quimbert



WP4 : Where is knowledge and its users?



<https://www.euroshell-fp7.eu/>



On focus

European shellfish extension network



Shellfish knowledge tools



Search by themes

The database allows you to find knowledge, projects or initiatives undertaken in recent years at European, national, regional, local levels, classified by theme.



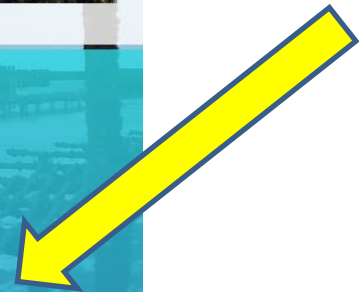
Research progress

The roadmap for research is defined on the basis of the 8 axes of the Strategic Agenda for Research and Innovation, it allows to visualize the progress of research for each axis.



Shellfish mapping

It allows you to locate production areas, research centers, professional organizations in addition to providing information on the different elements.



Shellfish knowledge tools



Themes

- Organizations producing or transferring knowledge
- Shellfish farmer's organizations
- Shellfish production areas
- Fisheries Local Action Groups (FLAGs)
- All themes

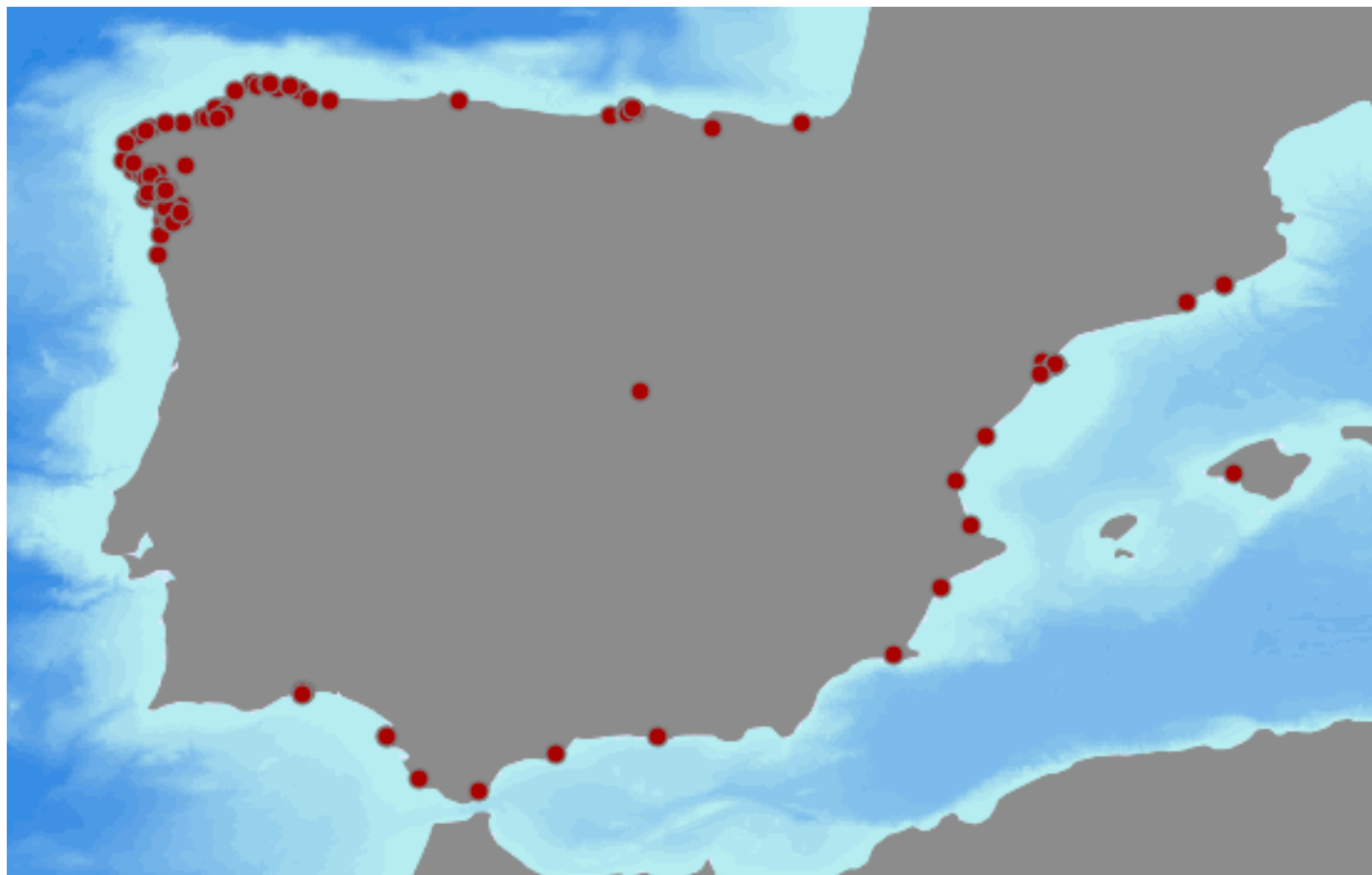
Countries

- Spain
- France
- Ireland
- Italy
- Netherlands
- United Kingdom
- All countries

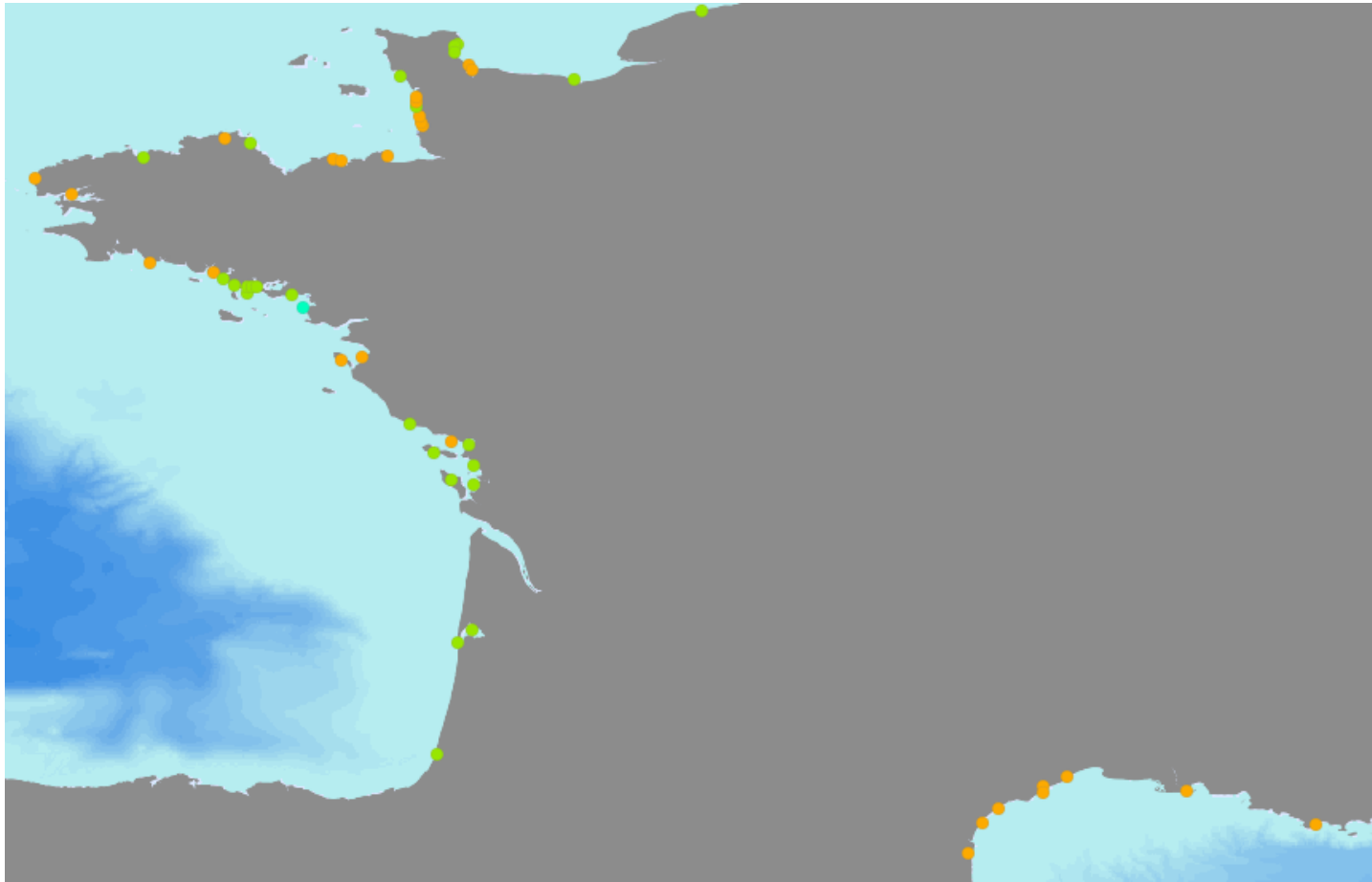
Search



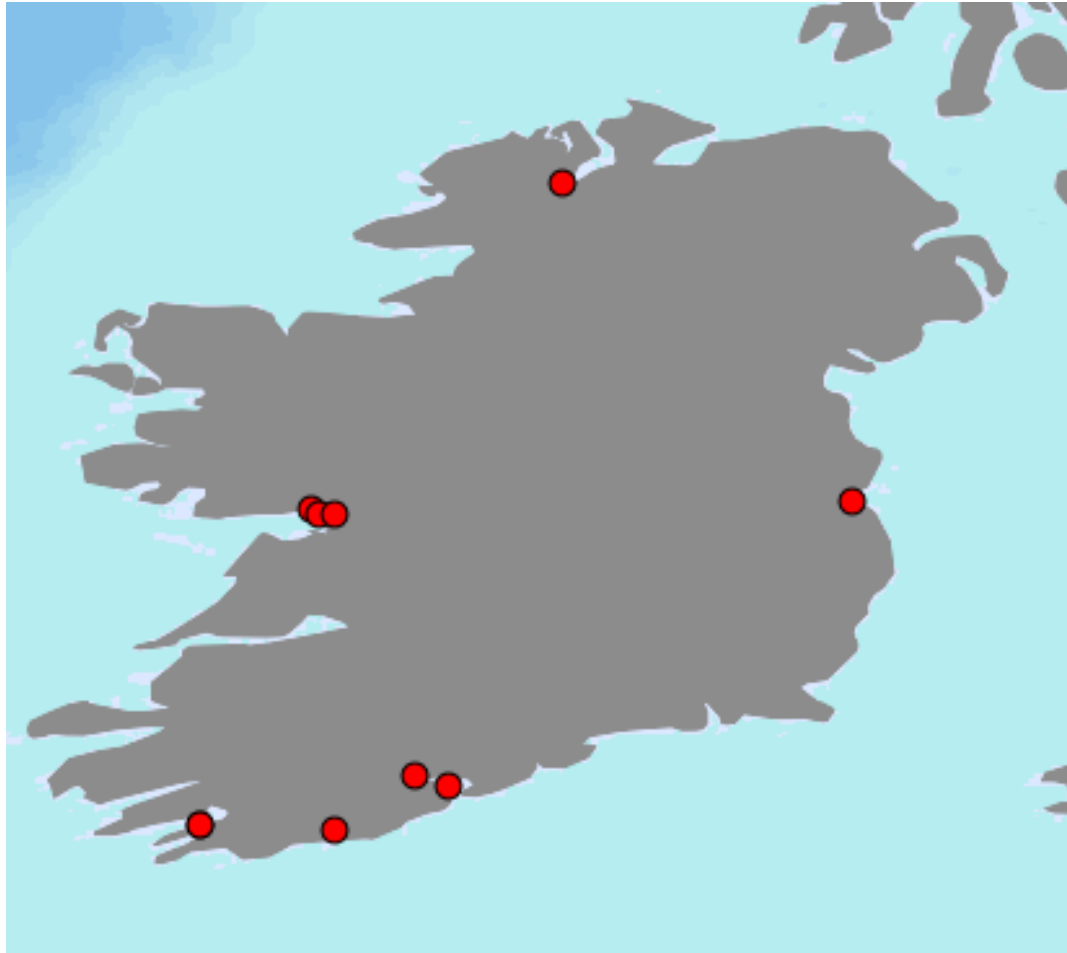
Shellfish farming organizations in Spain



Shellfish farming production areas in France



Organizations producing or transferring knowledge in Ireland



Information related to organizations producing or transferring knowledge in the Netherlands



Attribute information

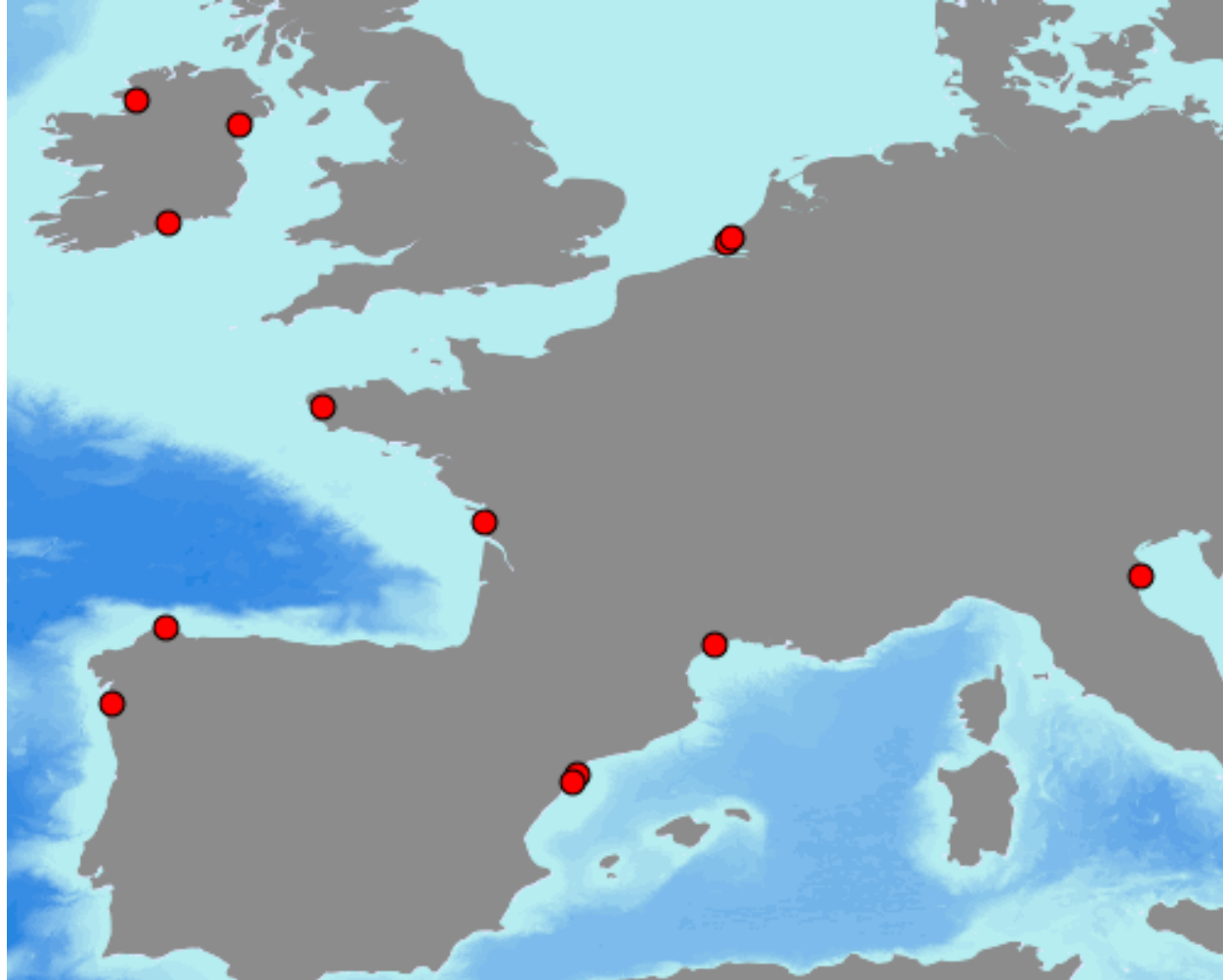
EUROSHELL - Organizations producing or transferring knowledge in the European shellfish sector - Netherlands

Name	Acronym	Organism	Contact	Email	Size	Status	Adress	Weblink	Y_coor	X_coor	MainSpeci
Netherlands Institute of Sea Research	NIOZ		P. Herman	peter.herman@nioz.nl	400	public	Korringaweg 7, 4401 NT, Yerseke, The Netherlands		51.489360	4.056934	Mytilus edulis
Institute of Marine Resources and Ecosystem Studies	IMARES	wageningen university and research centre	A.C. Smaal	aad.smaal@wur.nl	200	public	Korringaweg 5, 4401NT Yerseke, The Netherlands		51.489734	4.056076	Mytilus edulis

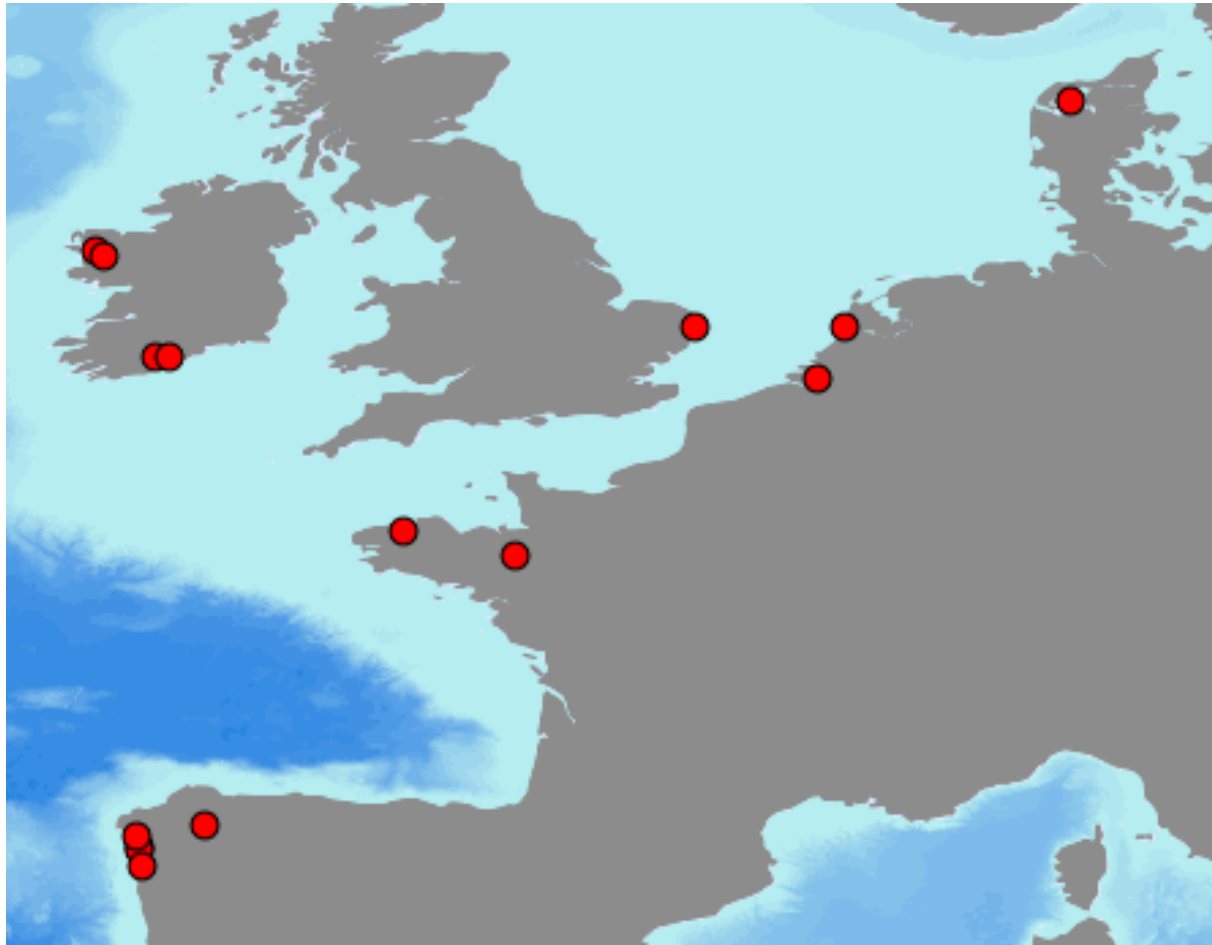
Lon: 3.34741 Lat: 51.97953



Sampling sites of the « BIVALIFE » EU project



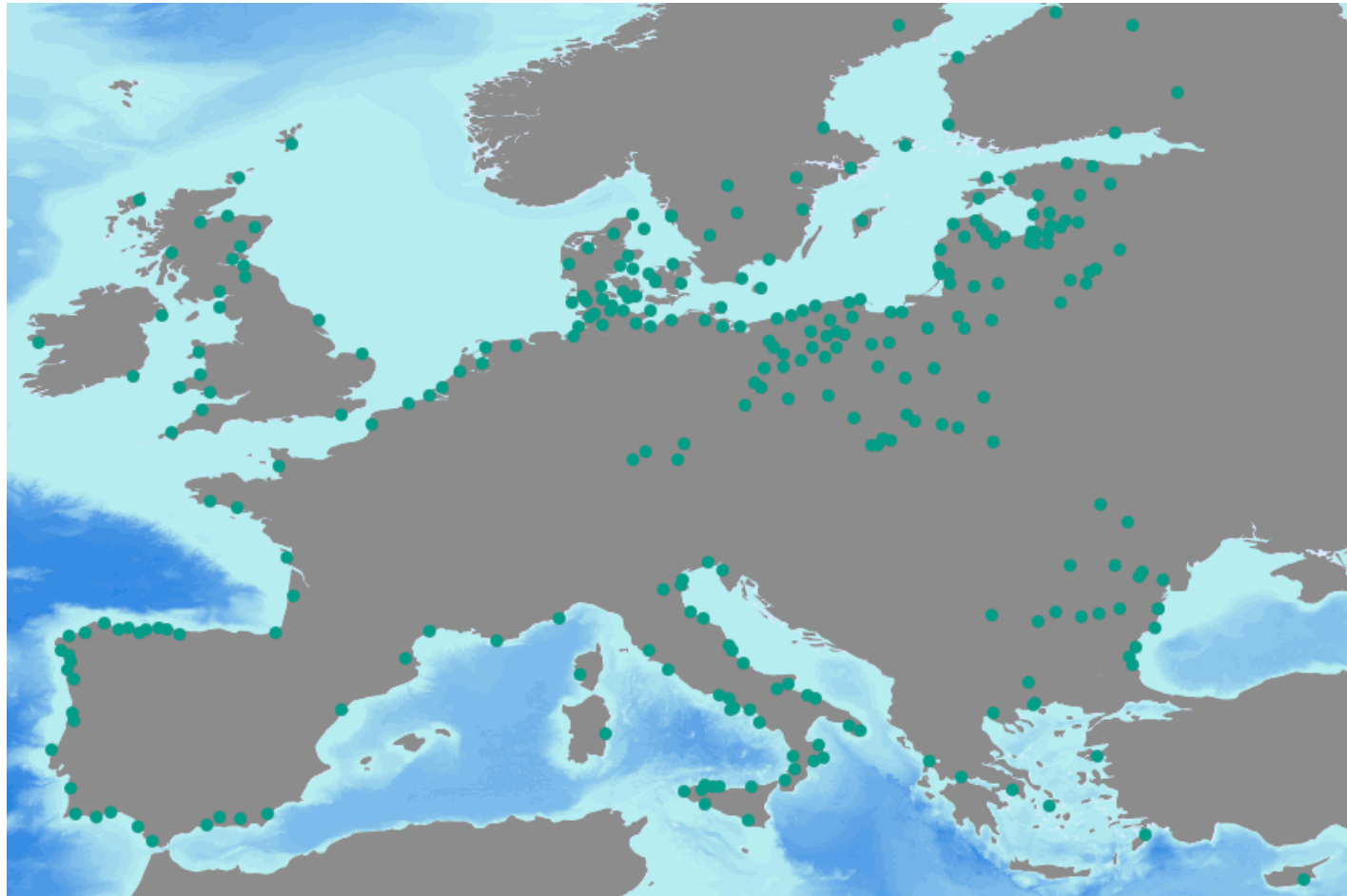
Partners of the « OYSTERECOVER EU Project



List of hatcheries listed
in the « REPROSEED » EU Project



Location of Fisheries Local Action Groups (FLAGs)





Thank you!

